



Sony Ericsson

Component Replacement

- electrical -



X10i, X10a, SO-01B

CONTENTS

1	Replaceable Components	3
2	Component Placing.....	6
3	Repair Actions	7
	3.1 Shield Can Fence Modifications	7
	3.2 Additional Repair Info	8
4	Revision History	12

***For general information about electrical repair related issues, refer to
1220-1336: Generic Repair Manual - electrical***



1 Replaceable Components

EXPLANATION OF ABBREVIATIONS USED IN THE COLUMN 'COMMENTS' BELOW

COMPONENT LOCATION

P = Primary side

S = Secondary side

MOISTURE SENSITIVITY LEVEL

MSLX (X = 1, 2, 2A, 3, 4, 5, 5A or 6)

For more information on moisture sensitivity levels:

Refer to 1220-1336: Generic Repair Manual – electrical, section 'Moisture & Baking'!

REPAIR METHOD

HA = Hot Air (removal & mounting)

ST = Soldering Tool (removal & mounting)

HA/ST = Hot Air for removal - Soldering Tool for mounting

BGA = BGA Station

BH = Bottom Heater

ADDITIONAL INFORMATION

⇒1 (2,3,4, etc.) = Proceed to 'Additional Repair Info' for further instructions in the indicated section(s).

CALIBRATION

C = Calibration of the phone is required after replacing the component

Calibration to be done by authorized centers only!



Component Replacement Repair Drawing Electrical/

Position	Component	Part no.	Comments
B3001	Crystal 32.768 kHz	1218-0542	P HA
B3200	Vibrator Bar Sanyo SMD	1208-0601	S HA⇒1
B4600	Microphone	1210-7410	S HA⇒6
C3108	Capacitor 70.0 mF 3.3 V	1000-0335	P HA
C3128	Capacitor Ceramic 1,0 uF +/-10% 25,0 V K	1000-0076	S HA ⇒2
C3420	Capacitor Ceramic 4.7 uF 10% 10.0 V	1001-1254	P HA
L3200	100nH 5% 0603 0.22A	1000-1893	P HA
L3201	100nH 5% 0603 0.22A	1000-1893	P HA
L3300	Ind WW 2,2 uH +/-20% K3012	1223-4064	S HA
L3301	Ind WW 2,2 uH +/-20% K3012	1223-4064	S HA
L3302	Ind WW 2,2 uH +/-20% K3012	1223-4064	S HA
L3401	Ind WW 4.7 uH K3012	1200-2214	P HA
L3405	Filter 100.0 MHz	1224-6060	S HA ⇒3
L3406	Filter 100.0 MHz	1224-6060	S HA ⇒3
L3501	Filter 100.0 MHz	1224-6060	P HA ⇒4
L3502	Filter 100.0 MHz	1224-6060	P HA ⇒4
L3503	Filter 100.0 MHz	1224-6060	P HA ⇒4
L3504	Filter 100.0 MHz	1224-6060	P HA ⇒4
L4604	Ind Chip 22.0 uH 20% 1608(0603)	1207-2753	P HA
L4605	Ind Chip 22.0 uH 20% 1608(0603)	1207-2753	P HA
N1001	IC Vreg PLP1010-4	1201-1568	P HA
N1500	IC Amp 3.3(L)x2.1(W)x1.1(H)	1223-7168	S HA
N3100	IC Linear	1224-6898	P HA
N3103	IC Lin TDFN-8	1221-6812	S HA ⇒5
N3104	IC Lin CSP-9	1216-7892	S HA ⇒2
N3300	ASIC PM	1221-7014	S HA
N3700	IC Linear Power Inductor	1224-7356	P HA
N3701	IC Linear Power Inductor	1224-7356	P HA
N3702	IC Voltage Regulator	1201-9681	P HA
N4100	IC 3-axis Electronic Compass	1224-3098	S HA
N4600	IC Amp	1217-2694	P HA
R3137	Resistor 0, Ohm +/-50m 63 mW K0603	1000-0257	S HA ⇒2
R3138	Resistor 0, Ohm +/-50m 63 mW K0603	1000-0257	S HA ⇒2
V3100	Trans PNP CHIPFET-8	1221-7351	S HA ⇒5
V3101	Trans P-ch FET WDFN6	1200-1780	S HA ⇒5
V3103	Diode Small-Signal 1,2 V	1223-4842	P HA
V3106	Diode	1000-0282	S HA ⇒5
V3402	Schottky Barrier Diode	1223-4213	P HA
V4600	Dual ESD protection diode 6V	1001-0730	P HA
V4602	ZenerDiode, 5.6V, Pb-free	1001-1864	P HA
V3405	ZenerDiode, 5.6V, Pb-free	1001-1864	S HA ⇒2
V3406	ZenerDiode, 5.6V, Pb-free	1001-1864	S HA ⇒2



Component Replacement Repair Drawing Electrical/

Position	Component	Part no.	Comments
X1500	Conn Coax Plug 6p RF-probe contact	1203-9688	S HA/ST
X1600	Conn Coax Plug 6p RF-probe contact	1203-9688	S HA/ST ⇒6
X1603	Conn Leaf Spring	1201-4841	P HA
X1604	Conn Leaf Spring	1201-4841	P HA⇒7
X1605	Conn Leaf Spring	1201-4841	P HA
X1606	Conn Leaf Spring	1201-4841	P HA
X1607	Conn Leaf Spring	1201-4841	P HA
X1608	Conn Leaf Spring	1201-4841	P HA
X3101	Conn USB micro B 0p front dip	1224-0652	S HA⇒8 If X3101 is not glued
X3401	BtB Connector 16p	1214-5348	S HA⇒9
X3402	BtB Connector 26p	1223-7712	S HA⇒10
X3403	BtB Connector 16p	1200-4735	S HA⇒11
X3404	Conn BtB 30 pin	1200-1733	S HA⇒12
X3405	Connector	1205-2016	S HA⇒13
X3406	Conn Leaf Spring Antenna conn	1200-2144	P HA
X3407	Conn Leaf Spring Antenna conn	1200-2144	P HA
X3500	Conn BtB 30 pin	1200-1733	P HA
Z1500	Filter SAW 1,57 GHz	1207-2628	S HA⇒14
Z1501	Filter Dpx 1.575 GHz TX 2.45 GHz RX	1225-2213	S HA ⇒14



2 Component Placing

To access the Component Placing document, double-click the icon below.
Applicable for on-screen viewing only – icon not shown on hard-copies.





3 Repair Actions

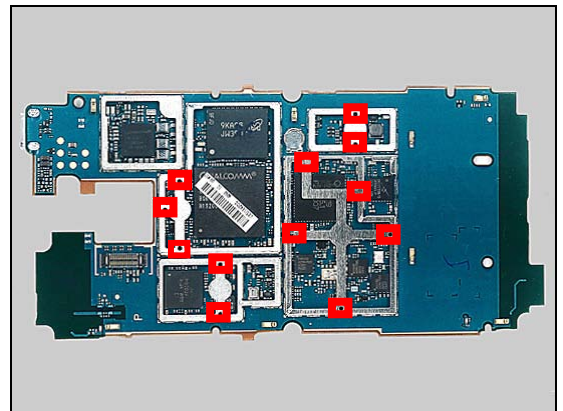
Refer to the Tools Catalogue/Matrix for information about equipment required for PBA repair!

3.1 Shield Can Fence Modifications

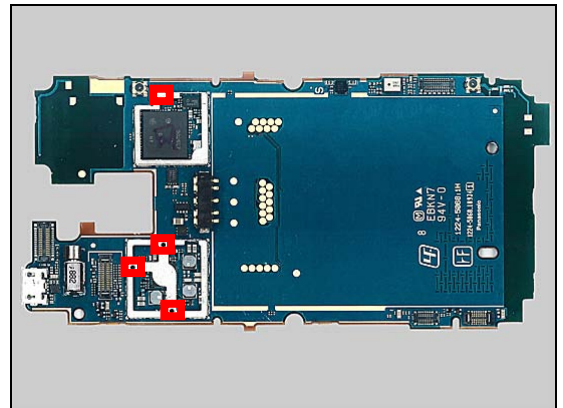
Refer to the pictures below of the primary and secondary sides for repairs that require the Shield Can Fence to be modified:

- the shield can lid has to be removed
- the red symbols show where the frame should be cut to enable rework
- after rework the height of the frame should not be affected
- it should not be visible that rework has been carried out when the lid has been mounted

Primary side



Secondary side





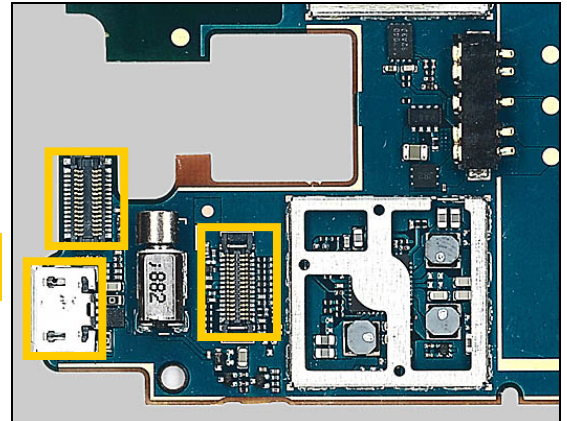
Repair Actions

3.2 Additional Repair Info

1

B3200

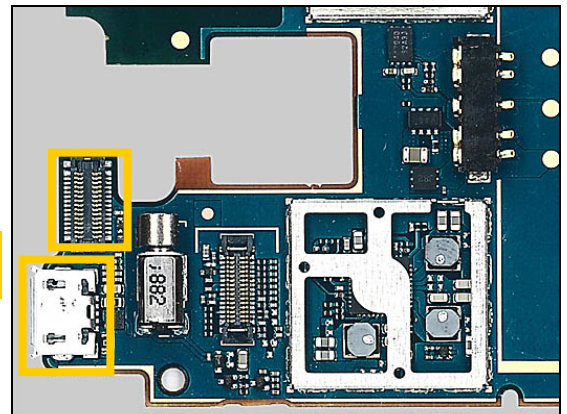
Protect system connector and two BtB connectors with capton tape!



2

C3128, R3137, R3138, N3104, V3405, V3406

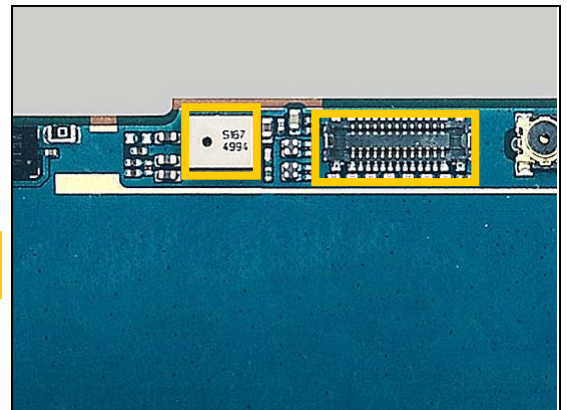
Protect system connector and BtB connector with capton tape!



3

L3405, L3406

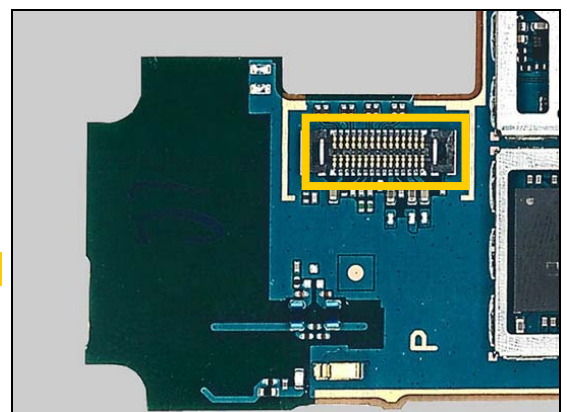
Protect BtB connector and Microphones with capton tape!



4

L3501, L3502, L3503, L3504

Protect BtB connector with capton tape!



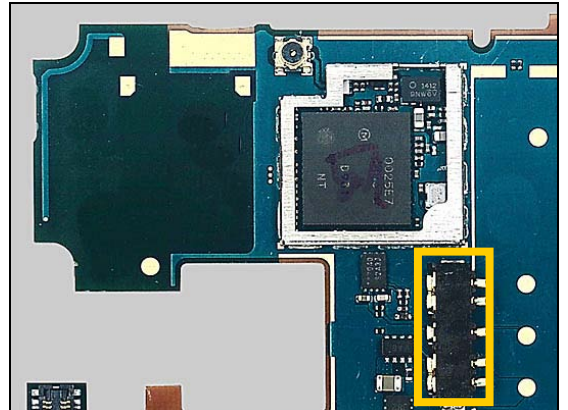


Repair Actions: Additional Repair Info

5

N3103, V3100, V3101, V3106

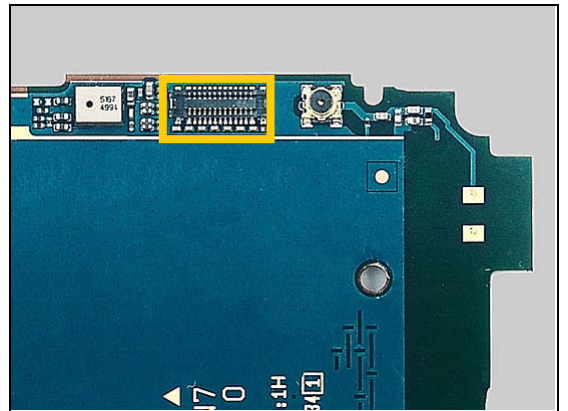
Protect battery connector with capton tape!



6

B4600, X1600

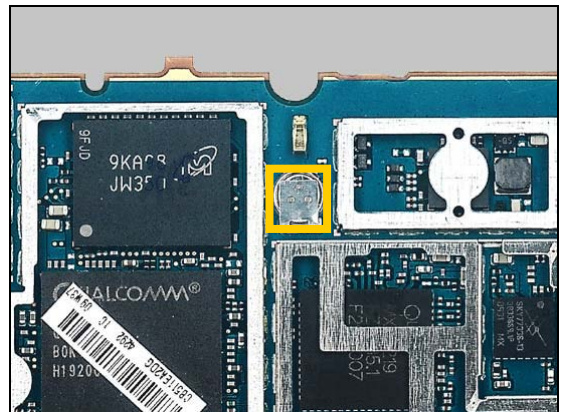
Protect BtB connector with capton tape!



7

X1604

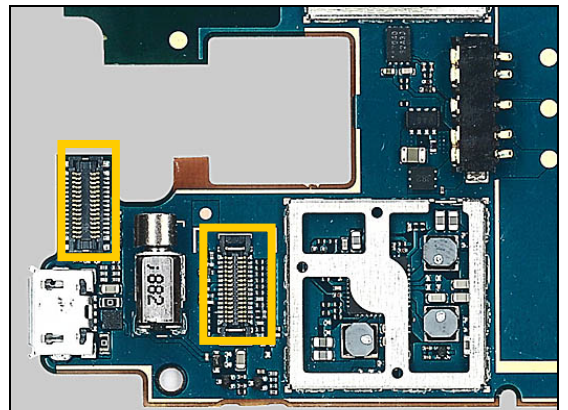
Protect battery with capton tape!



8

X3101 **IF NOT GLUED**

Protect two BtB connectors with capton tape!



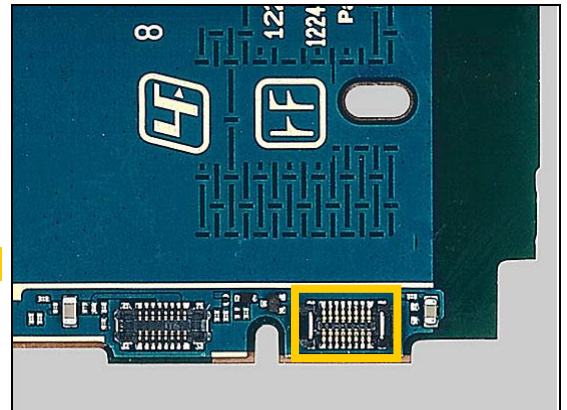


Repair Actions: Additional Repair Info

9

X3401

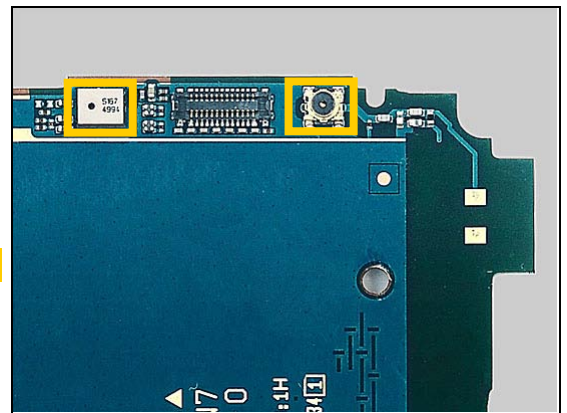
Protect BtB connector with capton tape!



10

X3402

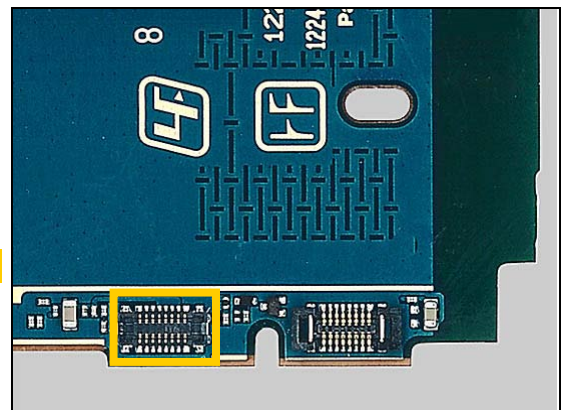
Protect microphone and connector with capton tape!



11

X3403

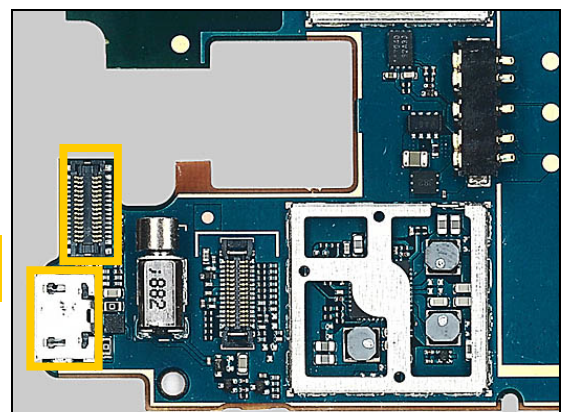
Protect BtB connector with capton tape!



12

X3404

Protect system connector and BtB connector with capton tape!



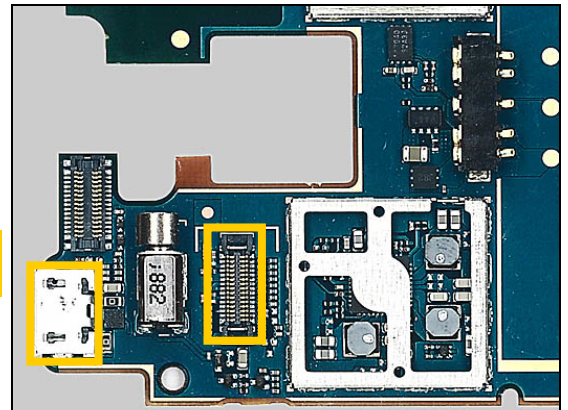


Repair Actions: Additional Repair Info

13

X3405

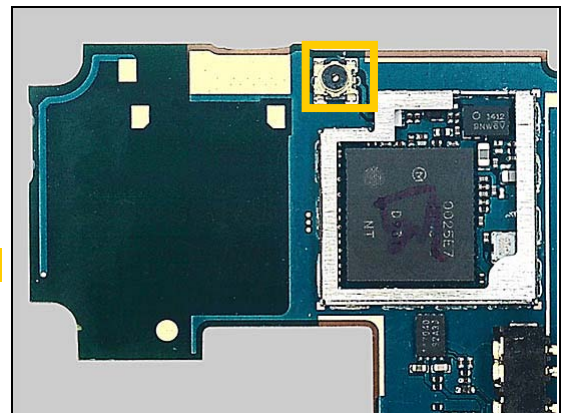
Protect system connector and BtB connector with capton tape!



14

Z1500, Z1501

Protect connector with capton tape!





4 Revision History

Rev.	Date	Changes / Comments
1	2010-Mar-11	Initial release
2	2010-05-24	Update B3200 parts' description
3	2010-10-11	Add V3405,V3406
4	2011-03-25	Update Part List, remove accelerator
5	2011-09-28	Updated due to Micro USB connector X3101 is glued after wk1021.